



When the wind blows hard and the sea rises up, loads and stresses on rigging increase tremendously. All too often this is the result

THE LIFE OF WIRE RUNNING RIGGING

By RUFUS G. SMITH



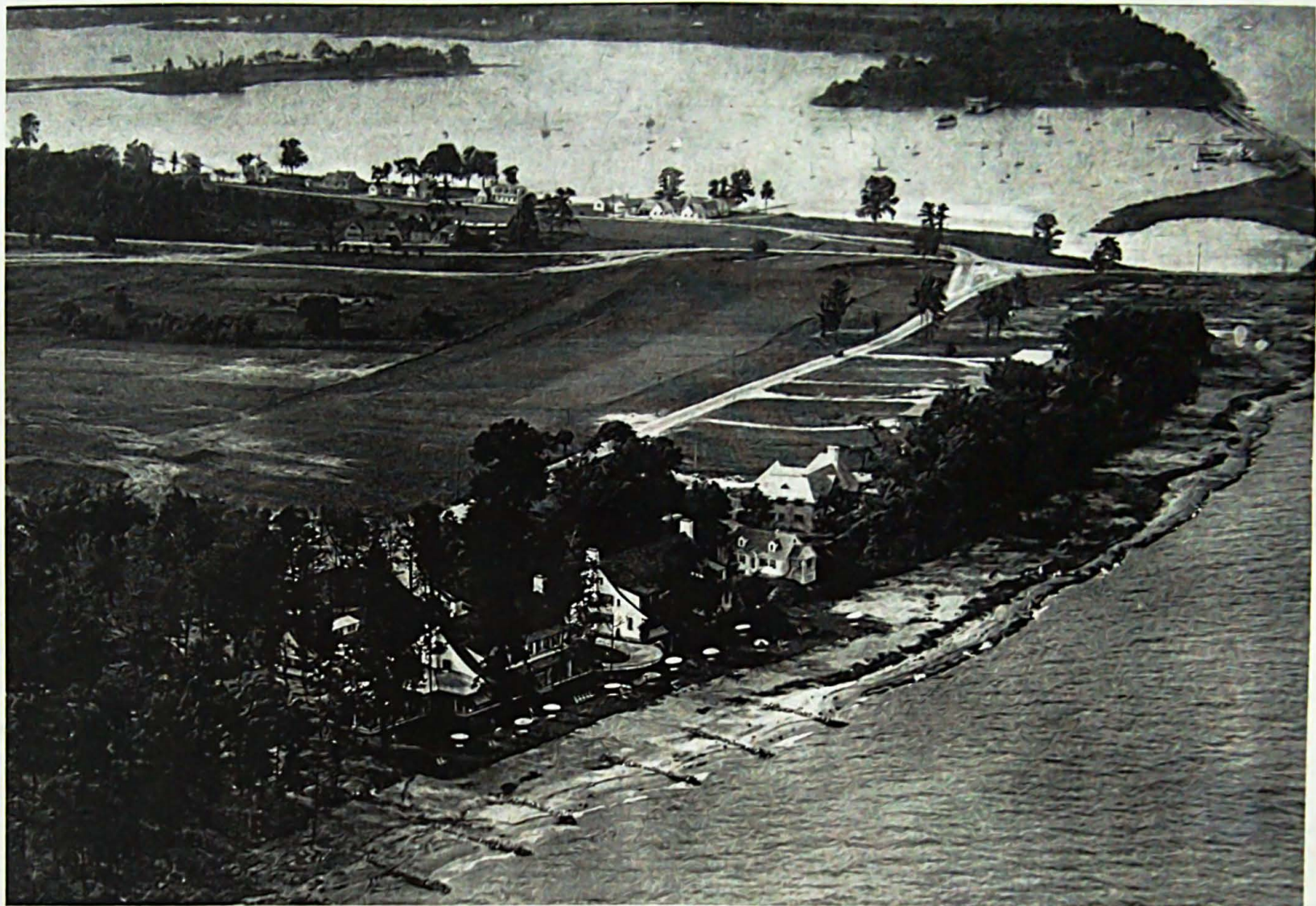
*CITY
ISLAND*

*F*ITTING OUT SEASON calls for an examination requirements as well as an inspection of your yacht surveyors for protection against possible hazards.

CHUBB & S

*Managers of the Federal Insurance Company
and Associated Companies*

90 JOHN STREET



Gibson Island, on the Magothy River, the usual mecca of yachts which cruise the Chesapeake